

Mittel zur Umsetzung der EUTR und Wirksamkeit



Funded by the LIFE programme of the European Union and UK Aid from the UK government. The European Commission support for the production of this publication does not constitute endorsement of the contents which reflects the views only of the authors, and the Commission cannot be held responsible for any use which may be made of the information contained therein. This material has been funded by UK aid from the UK government; however the views expressed do not necessarily reflect the UK government's official policies.



EUTR knowledge,
tools and training

Certification Services

Our services focus on forest and climate impact commodities and related sectors.



Examples include cocoa, coffee, palm oil, forest products, carbon footprinting and tourism.



6-0044-16-100-00





NEPCon Sourcing Hub

FREE



Funded by the LIFE programme of the European Union and UK Aid from the UK government. The European Commission support for the production of this publication does not constitute endorsement of the contents which reflects the views only of the authors, and the Commission cannot be held responsible for any use which may be made of the information contained therein. This material has been funded by UK aid from the UK government; however the views expressed do not necessarily reflect the UK government's official policies.



EUTR knowledge,
tools and training



NEPCon Sourcing Hub



Timber



Palm Oil



Beef



Soy

www.nepcon.org/sourcinghub 



Timber



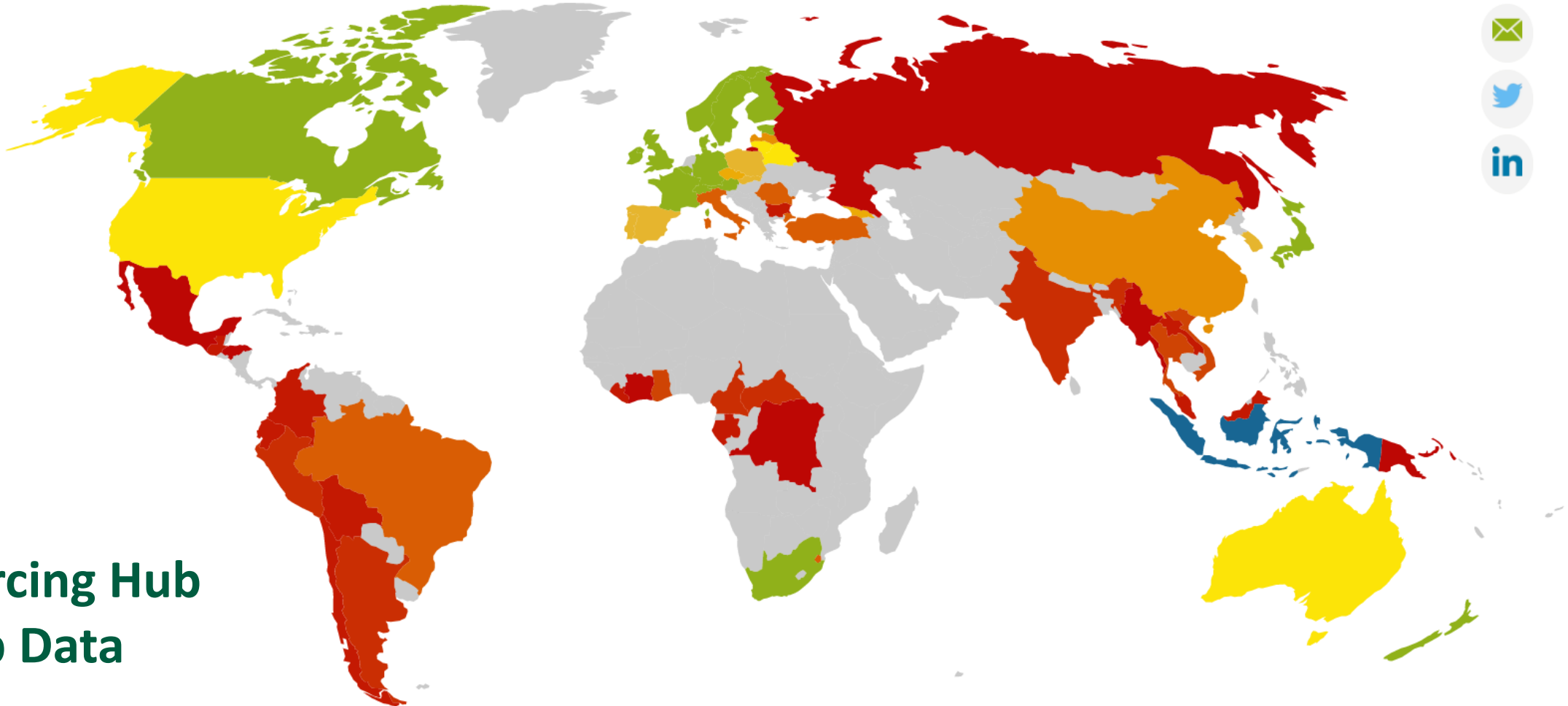
Beef



Soy



Palm Oil



Sourcing Hub
Map Data

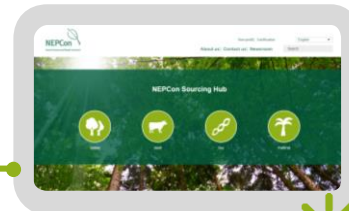
78

Country risk assessments
for
timber, palm oil,
beef, and soy
covering supply chains
from all over the world



125+

Guidance and tools
to help
companies
evaluate and manage
the risks
in their supply chain



Funded by:

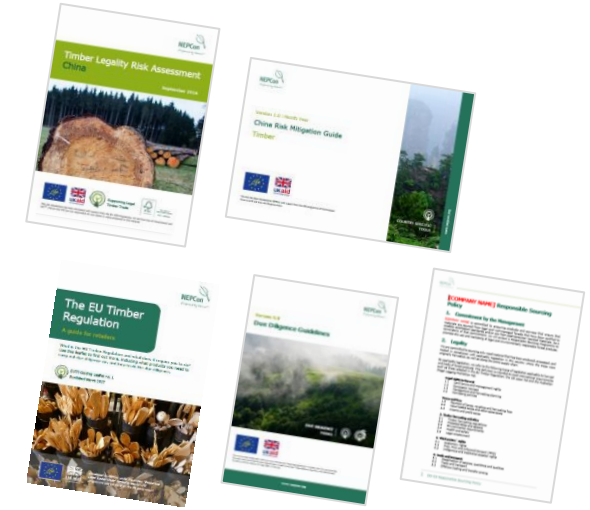
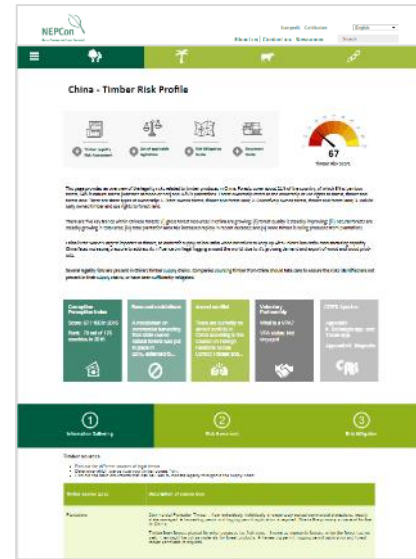
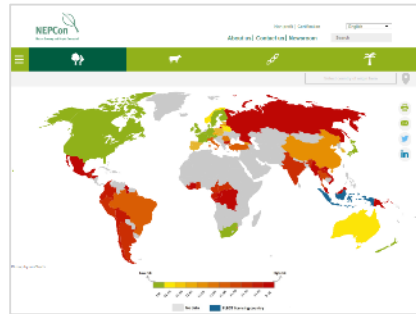
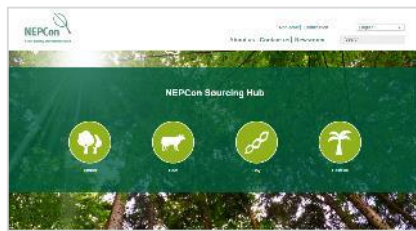


NEPCon Sourcing Hub is funded by UK Aid from the UK government, the LIFE programme of the European Union and DANIDA, Ministry of Foreign Affairs of Denmark. Donors are not responsible for any claims or views presented in this material. The European Commission support for the production of this publication does not constitute endorsement of the contents which reflect the views only of the authors, and the Commission cannot be held responsible for any use which may be made of the information contained therein. The views expressed do not necessarily reflect the UK government's or DANIDA's official policies.

The majority of the Timber Legality Risk Assessments have been funded (in full or in part) by the Forest Stewardship Council as part of their Controlled Wood Centralized National Risk Assessment Programme.

Everything you need for due diligence in one place

FREE



1
SELECT
commodity

2
ACCESS
an overview map of
sourcing risks
+
SELECT
country for details

3
VIEW
country detailed risk data
(e.g. risks related to each
type of forest
production...)

4
EXPLORE
a suite of country
guidance and due
diligence tools to
mitigate the risks



Risk Assessment Framework

Legal rights to harvest



- Land tenure and management rights
- Concession licenses
- Management and harvesting planning
- Harvesting permits

Taxes and fees



- Payment of royalties and harvesting fees
- Value added taxes and other sales taxes
- Income and profit taxes

Timber Harvesting Regulations



- Timber harvesting regulations
- Protected sites and species
- Environmental requirements
- Health and safety
- Legal employment

Trade & transport



- Classification of species/quantities, qualities
- Trade and transport
- Offshore trading and transfer pricing
- Custom regulations
- CITES
- Due diligence and due care

Third parties' rights



- Customary rights
- Free prior and informed consent
- Indigenous/traditional peoples' rights

Analysis of each of these 21 sub-categories

Data sources for risk assessments



How do we determine low or specified risk?

Considered low risk

Problems that are:

- Temporary
- Unusual or non-systematic
- Limited in their impact
- Effectively controlled by monitoring and enforcement by efficient and effective government agencies

Considered specified risk

Problems that:

- Affects a wide area and/or causes significant damage and/or continues over a long period of time.
- Indicates the absence or break down of enforcement of the legal system.
- Is not corrected or adequately responded to when identified.
- Has a significant negative impact on society, the production of forest products and other services, the forest ecosystem and the people directly and indirectly affected by forest operations.



On the Sourcing Hub



General information about:

- Due diligence
- The EUTR
- Illegal logging
- Certification systems
- New technologies and developments

Country specific information about:

- The timber sector
- Corruption, CITES, logging bans, armed conflict and certification
- Sources of timber
- Documents required for legality
- News updates




EUTR knowledge,
tools and training



News and Resources

FLEGT.org reports **Study identifies options for legal timber legislation in China**

A summary report of the Feasibility Analysis of the Incorporation of Timber Legality Requirements into Chinese Laws or Regulations to Forest Products was published. The analysis was undertaken jointly by the EU (DG Environment and European Commission) and China administration and Chinese Academy of Forestry), in the context of the EU – China Bilateral Coordination Mechanism (BCM) on Forest Governance (FLEG).

Read the summary of the report [here](#)  .

October 2017

EFI Briefing : **Introduction to China's Timber Legality Verification System**

The Government of the People's Republic of China and the Chinese forest industry are developing policies, tools, standards and initiatives to combat logging and trade in illegal timber. The ambition is to develop a timber legality framework that meets international and Chinese market requirements for global trade in legal and sustainably sourced forest products, assists Chinese enterprises operating in international markets, and promotes chain transparency throughout the timber sector.

...and you can download the Document Guide to find out more:

NEPCoN
Nature Economy and People Connected

Select country of origin here

China Timber Risk Profile

Toolbox

- 1 Timber Risk Assessment
- 2 List of applicable legislation
- 3 Risk Mitigation Guide
- 4 Document Guide

Risk Score: 67

Example of forest tenure certificate

森林、林木、林地状况登记表 No. 1

林证字()第 号

Name of the holder

根据《中华人民共和国森林法》规定, 本证中森林、林木、林地所有权或者使用权, 业经登记, 合法权益受法律保护。

特发此证

Seal of issuing authority

发证机关(印)

年 月 日

Issuing time

林地所有权人	林地使用权人
森林或林木所有权利权人	森林或林木使用权权利人
坐落	Location
小地名	林班 小班
面积	Area 主要树种 Main species
株数	林种 Forest type
林地使用期	Valid period 终止日期
四至	GPS location
注 记:	
填证机关	(机关印)
经办人:	负责人:
年 月 日	年 月 日

1

INFORMATION GATHERING

2

RISK ASSESSMENT

3

RISK MITIGATION



Risk assessment summary

Legal rights to harvest



- Risk of lack of registration and tenure certificates (applicable only to collective forest plantation only)
- Risk of conflicts in relation to land rent (applicable only to collective forest plantation only)
- Risk of lack of management plans and failure to meet the requirements for drafting management plans (applicable to state-owned forest management enterprises)
- Risk of harvesting without permit and unlawful issuing of harvesting permit

Taxes and fees

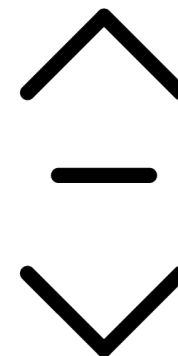


- Risk that value-added taxes (VAT) are not paid appropriately

Timber harvesting activities



- Risk of lack of use of safety equipment
- Risk of lack of employment contracts
- Risk of lack of social security payments





INFORMATION GATHERING



RISK ASSESSMENT



RISK MITIGATION



Mitigation recommendations for non-certified materials

Where certified materials are not available, we have two tools to help you mitigate risks for Chinese timber supply chains:

- the [Risk Mitigation Guide](#) gives you a detailed overview of risks in China, and how to mitigate them.
- the [Document Guide](#) provides you with a list of all required documents and examples of key documents and how to use them in mitigating risks.

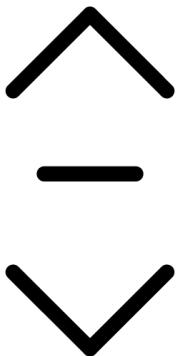
The tools above give you the most information. Below is a summary of our six recommended actions to mitigate the risks associated with timber sources from China that are not third party certified.

1. Fully map your supply chain

- Our [supply chain mapping tool](#) can help you do this.

2. Obtain and verify documents

- Forest level documents
 - Business Registration Certificate and Tax Registration Certificate
 - Contract
 - Forest Tenure Certificate
 - Harvesting permit



Everything you need for due diligence **in one place**





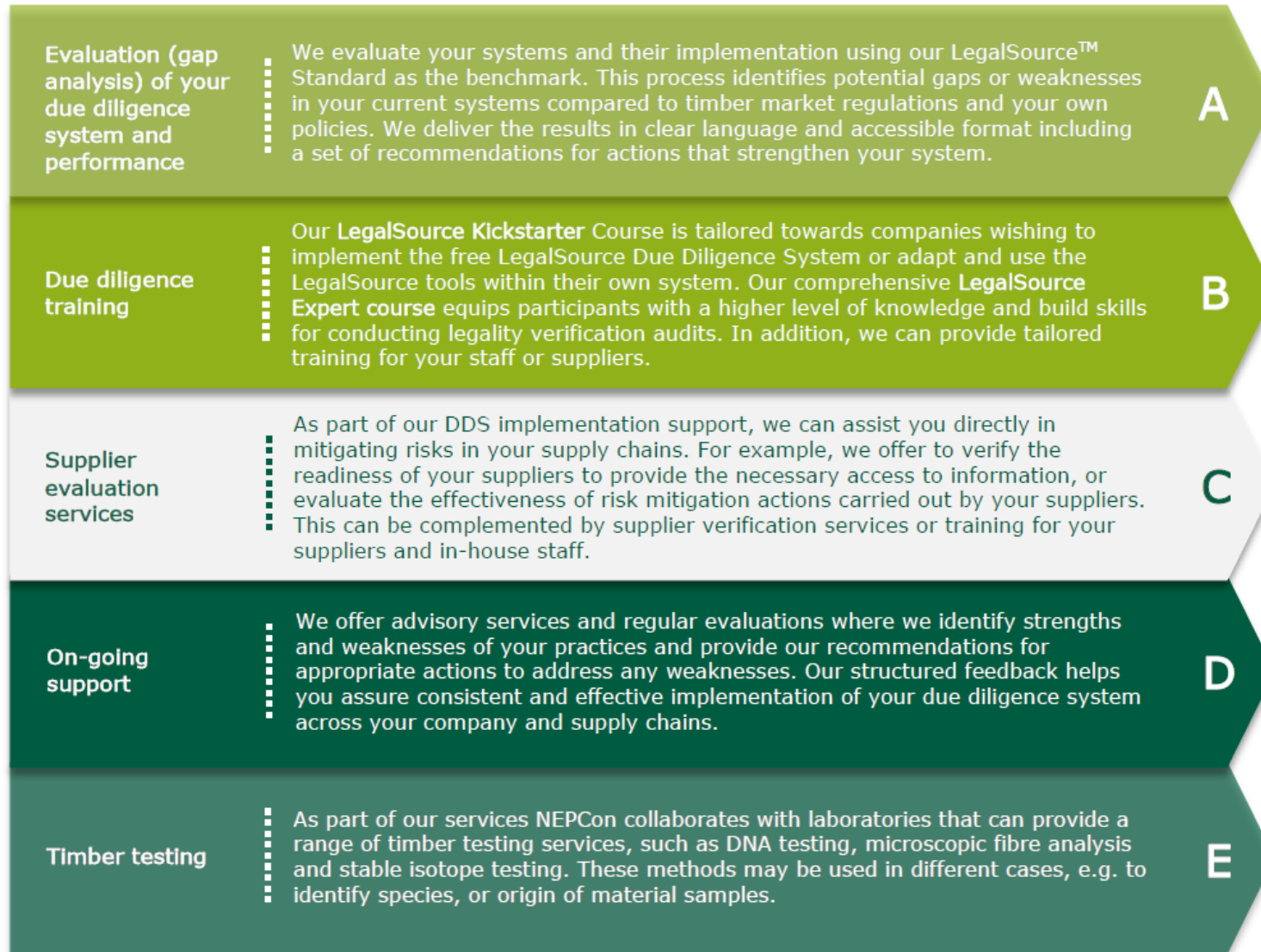
FREE quarterly newsletter

- Update you on all the developments of the Sourcing Hub in the previous 3 months, including new tools and articles.
- Share important legality news
- Bring insights and information from industry and thought leaders direct to you.



EUTR knowledge,
tools and training

NEPCon support



EUTR knowledge, tools and training

1. FSC Lieferkette/ FSC Produkte....welche Dokumente?
2. Unterschied MDF und Massiv?
3. Ukraine / Russland - Wann vernachlässigbares Risiko?
4. VRIKSH -Zertifikat aus Indien einen risikomindernden, bzw. legalitätsnachweisenden Charakter ?



Keep in Touch with Us



Mühlenstraße 8a
14167 Berlin



Michael Kutschke
**Regionalleiter Deutschland, Österreich,
Schweiz**
mku@nepcon.org | + 49 176 909 48 964