



„RAUM und RISIKO“

Überlebensraum Straße

Dr. Fritz Menzl

Vortrag am 20. September 2023





°Schmuckfeder Auto° (Antal Festetic)



Abstimmung mit Füßen



Filippo Palizzi , pinx.1874
An der Tränke, Museo Revoltella, Triest



Franz Sedlacek, Der Besessene ca.1940, Lentos, Linz

Mit frdl. Genehmigung des Lentos Kunstmuseums





„Desirelines-Abstimmung mit Füßen!“
(Gmunden)



Anlage eines Weges
Risikowaage



Anlage eines Weges
Risikowaage: Rufweite 😊



Gestaltung gegen den Strich....

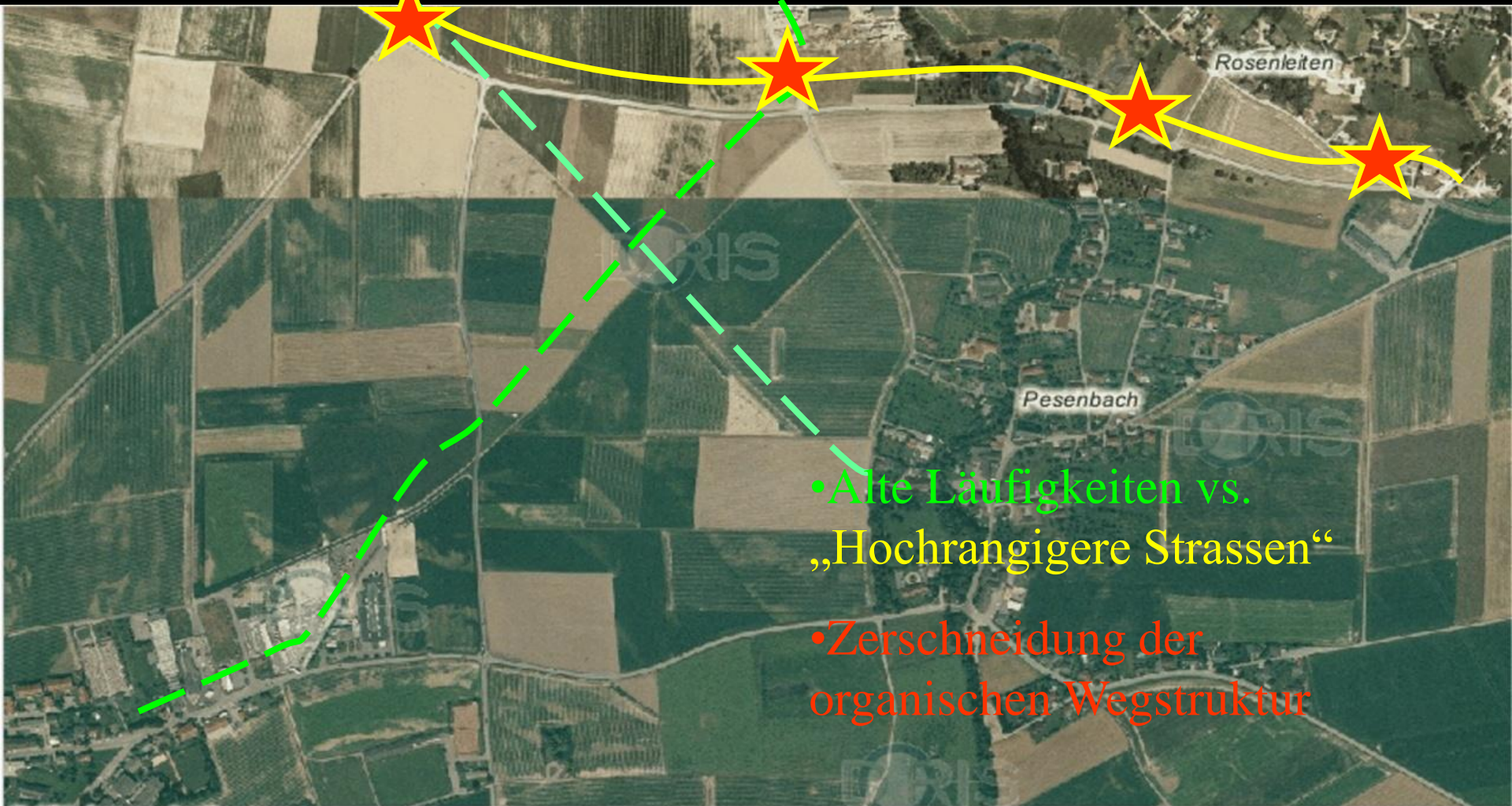




Wildwechsel am Karlsplatz



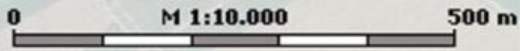
Wildwechsel am Karlsplatz



- Alte Läufe vs. „Hochrangigere Strassen“
- Zerschneidung der organischen Wegstruktur

Quelle: [DORIS](#), [BEV](#) nau

Hinweis: Kein Rechtsanspruch aus obiger Karte ableitbar, kommerzielle Nutzung unzulässig!



Jeder hat so sein Autoleben





Vertrauensgrundsatz



Volvo 144S, 1971 war ein „Großes Auto“



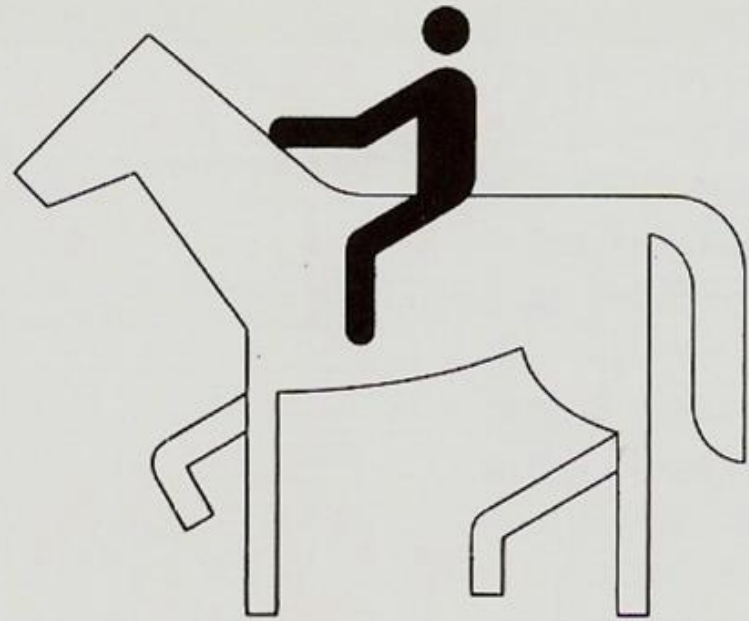
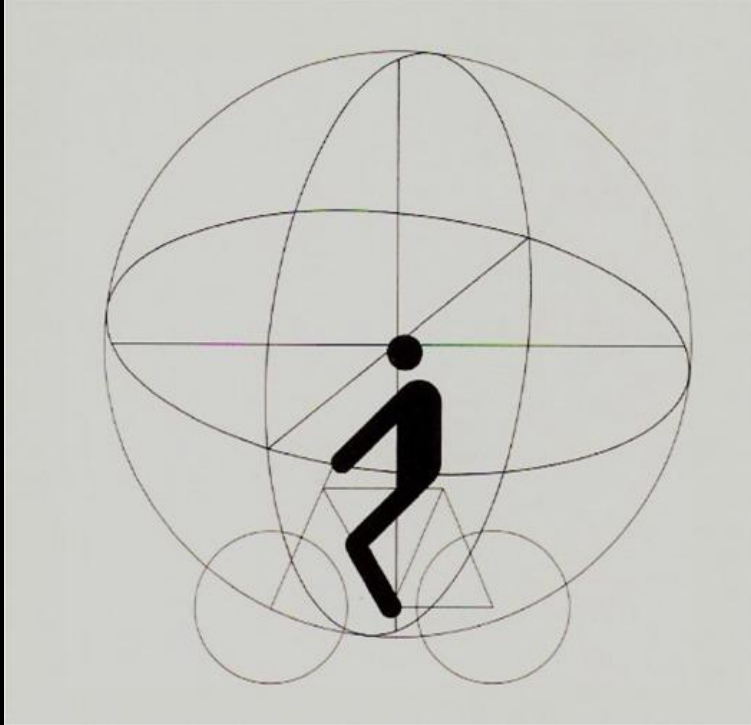
Kingdom Kustoms

4 Tage · 🌐

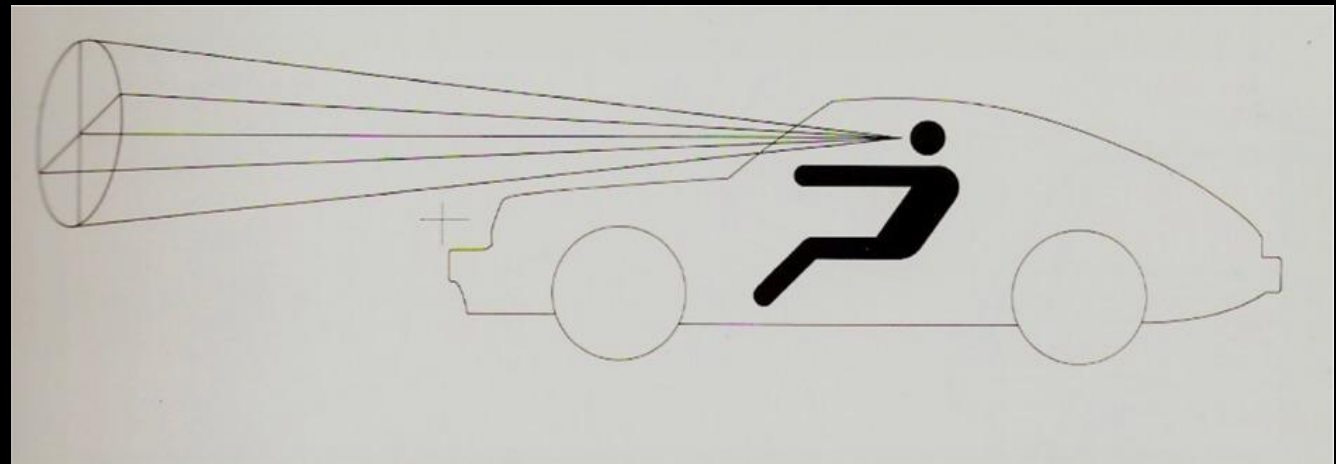
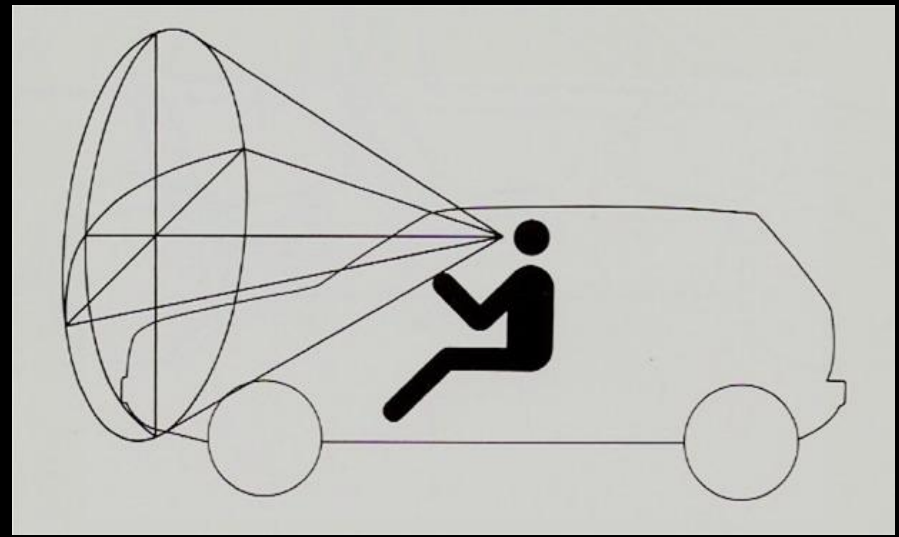


Gilt auch
für
Radfahrer

Sehen und Sitzen
(Ottl Aicher, 1982, Kritik am Auto)







Spiegelarbeit ? 3-S Blick? Turtle-neck?



Generation Z
(Fraktioniertes Denken ?)

Reden wir vom Abstand und Linksklebern



Der Erste gibt die Regeln vor ...

© Dr. Felix Mezger



Sicher hinter dem Leittier ...

© Dr. Peter Menzl

„Wenn einer unserer Vorfahren ... kein
„Vorurteil“ gehabt hätten....“
Erkennen von Mustern



Shapes are Concepts



In der Steiermark gibt es die
schnelleren Hirsche!



Gut gemeint ?



<https://www.krone.at/1902948>



Gessler's Hut ... !

Scherenschnitt P.v.Lichtenfels, 1870





dr. menzl



TSS Training-Schulung-Seminare



AUTO GEZÄHMT VON:



Schritt
fahren

Hier gilt
die StVO

EIN / AUSFAHRT
LINKSVERKEHR

 Hier gibt es
einen
Defibrillator

STOP

Unbefugtes
Einsteigen
verboten!
Abweisung
bei der Leitung

Ladung





„ Vom Menschenzoo ... 😊 “

Renault Master White Van Man Study

Introduction



Ever since the term "White Van Man" was coined in 1997, by Sarah Kennedy on Radio 2, van drivers have taken on the mantle of what sociologists refer to as 'folk devils'. Overtaking even the football hooligan in the league table of social undesirability, WVM is now most often viewed as a mobile thug - a dangerous threat to the decent, right-thinking, motoring majority.

In the media, WVM is variously described as "aggressive", "tattooed", and a "tailgater". He is the "white male" and a "mad bastard" who "never signals", "cuts up" other drivers and uses the kind of vocabulary that has to be represented by asterisks in newspapers. So friendless has he become that those specialists in populist opportunism, the New Labour Government, have felt obliged to contribute to his public censure. The Minister of Transport, John Prescott, has made it clear that WVM's days are numbered.

<http://www.sirc.org/wvm2003/index.shtml>

The Renault 'New' Van Man Report

The evolution of Silver Van Man

A man from the electricity company came to change the meter in the Social Issues Research Centre office. As he went outside to collect the various parts he needed for the job I noticed a gleaming silver van bearing his company's logo, parked tidily on the pavement. When he returned I said "Nice van!" He smiled with modest pride and replied "Yes, the company look after us well in that department – it's more like driving a big car." "What about the colour?" I said. "Well it's class isn't it, silver ..."



Introduction

Five years ago we published the results of the first **definitive study** of White Van Man – a species of driver that had gained an unenviable reputation for being an 'aggressive lunatic' on the roads and a threat to all other road users. The popular press featured WVM as the modern-day football hooligan or lager lout – a breed of xenophobic and loutish moron who should never be trusted and, wherever possible, avoided. Such a danger had he seemingly become that even the government of the day threatened to curb his cavalier disregard for the highway code and his inherent anti-social tendencies.

http://www.sirc.org/publik/white_van_man.html

Innere Balance, die Risikowaage, Torwirkung

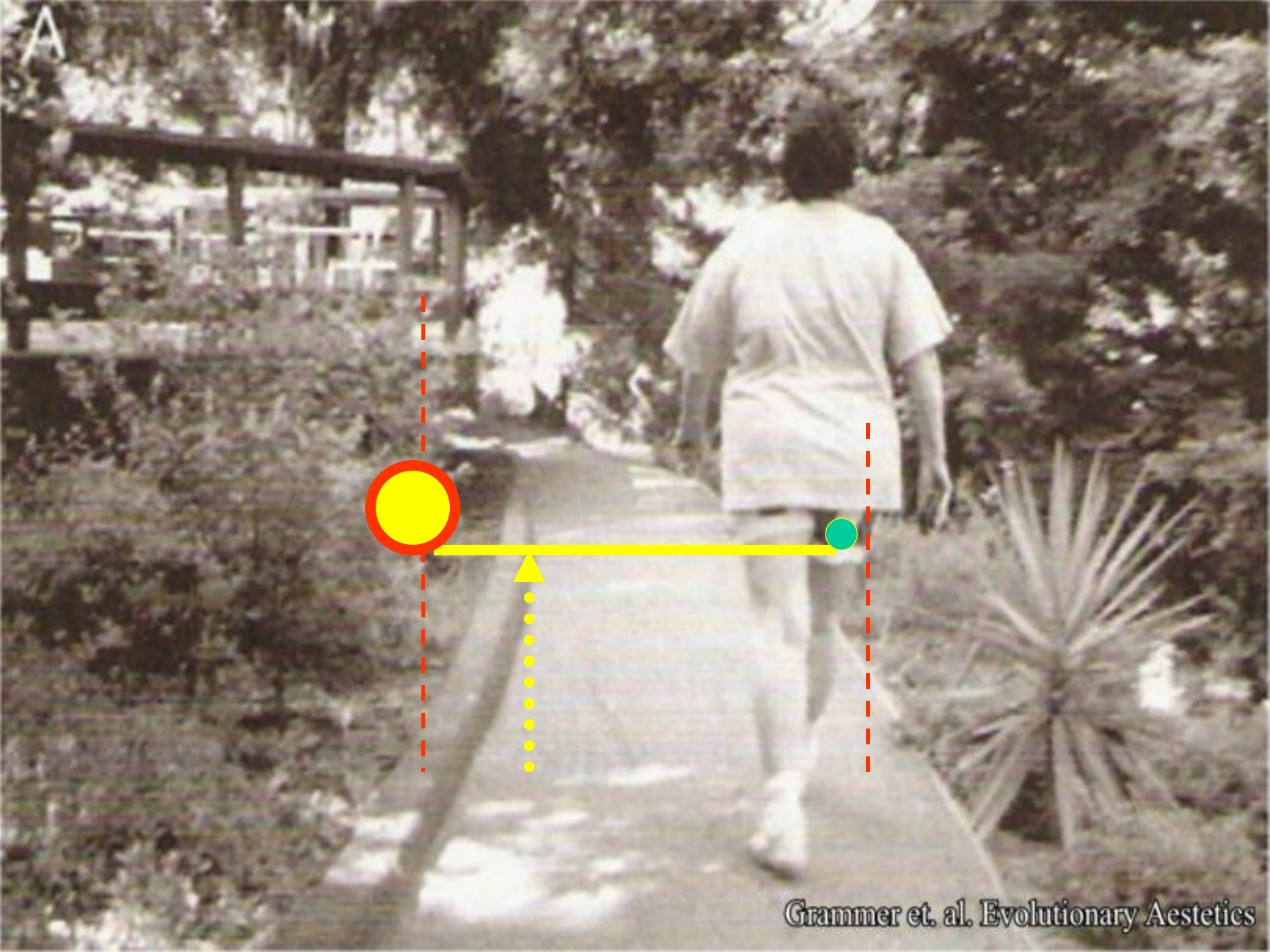


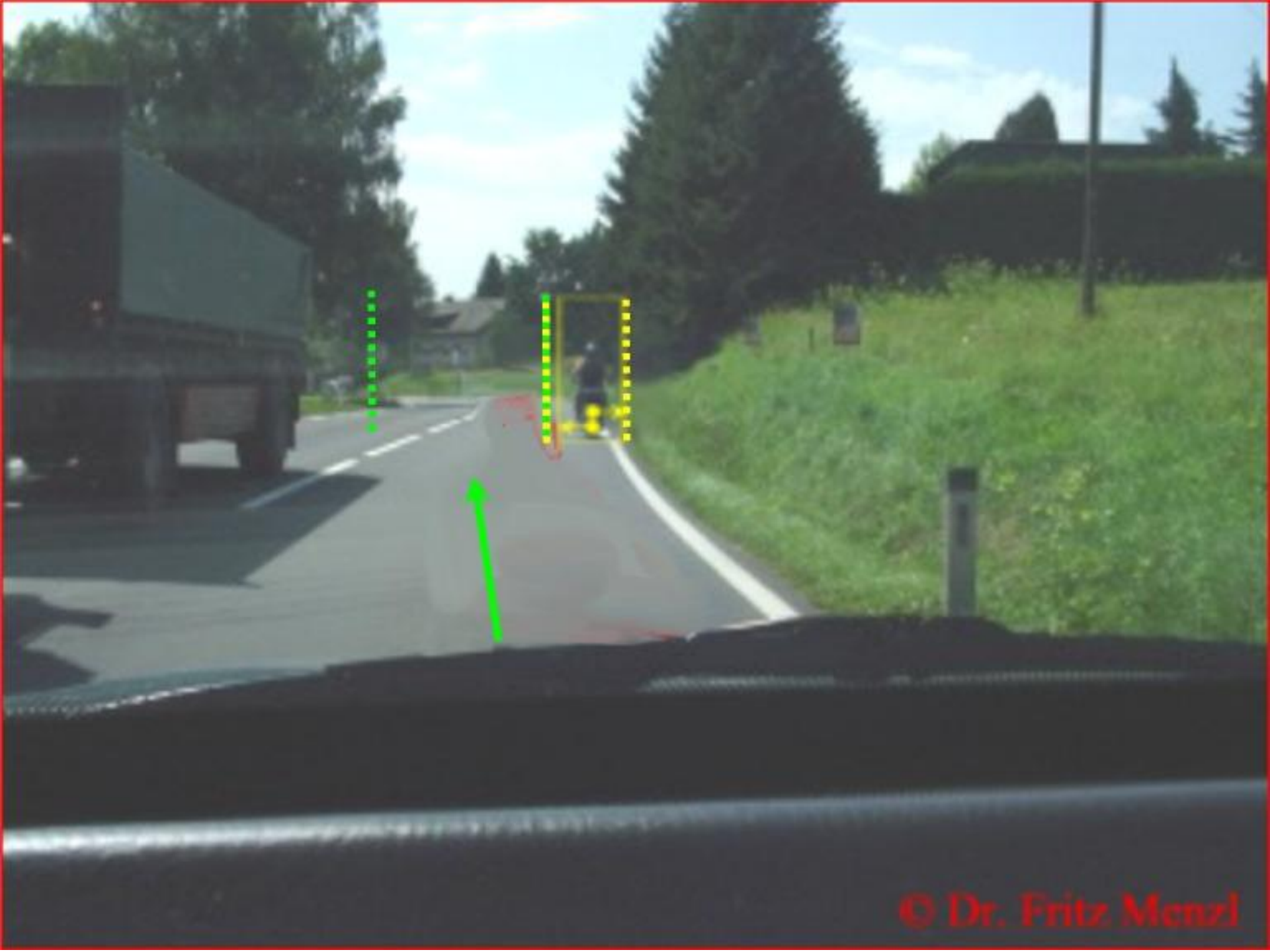
Risikowaage



Wörtlich ...

A







Hans-Erhard
Lessing


Tony Hadland



Evolution des Fahrrads



SACHBUCH

 Springer

.... auch noch nicht
abgeschlossen ...





Früh übt sich

**TEACH YOUR KIDS TO
COUNT BIKES ON CAR JOURNEYS**



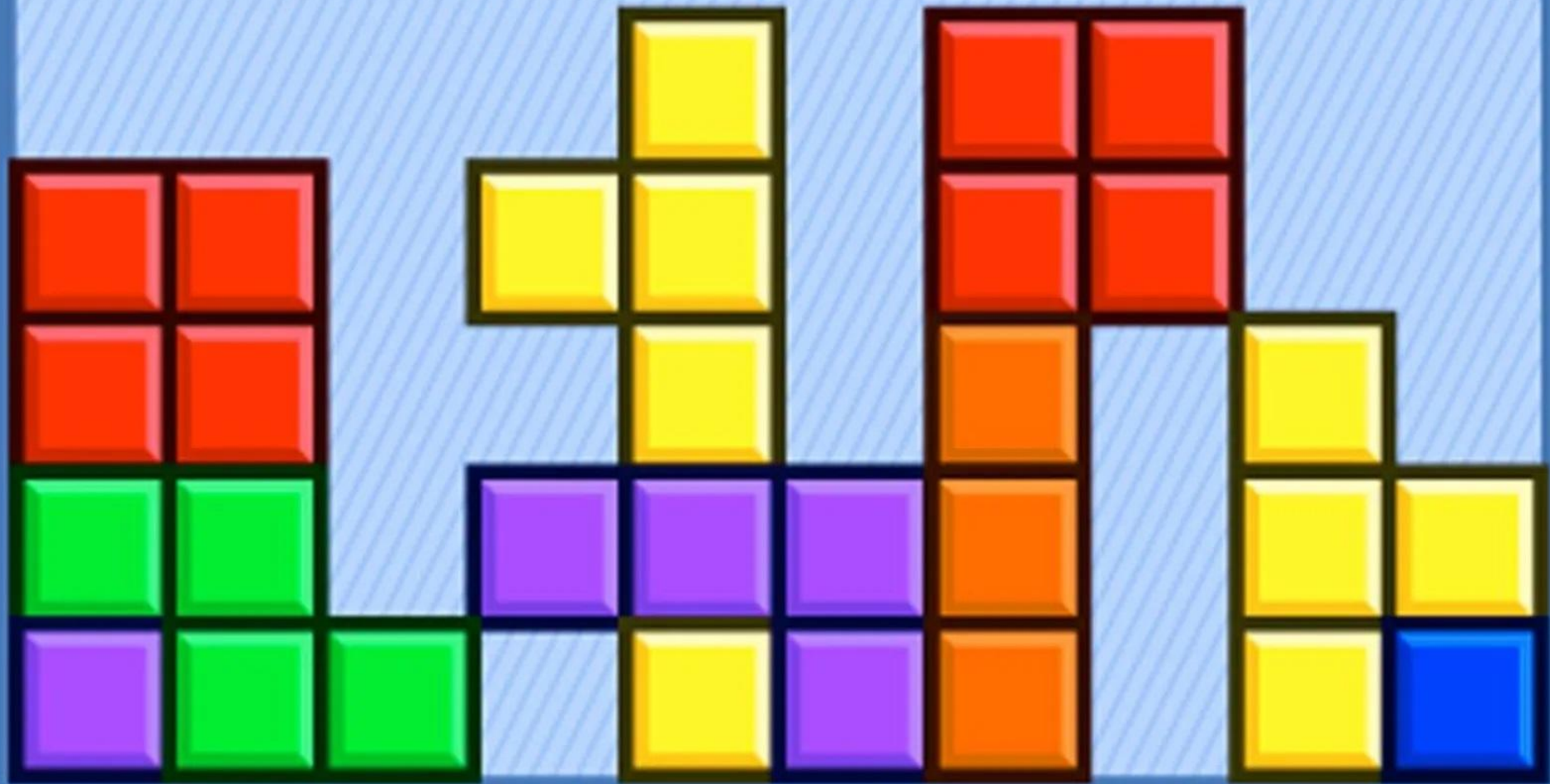
**AND THEY WILL AUTOMATICALLY SEE
US WHEN THEY START TO DRIVE**

<https://www.ultimate-motorcycle.co.uk/blogs/news/teach-your-kids-to-count-bikes-on-car-journeys>

Vorausschauendes Fahren ?

Voraussehendes Fahren!

Kennen Sie einen „Hellschauer“ ☺



Fahraufgabe ist eigentlich wie TETRIS

<https://www.bbc.com/future/article/20121022-the-psychology-of-tetris>



Danke für Ihre/Eure
Aufmerksamkeit

dr. menzl



TSS Training-Schulung-Seminare

Am Pfarrfeld 21
A-4101 Feldkirchen/Donau
0664/5431674

tssmenzl@a1.at